

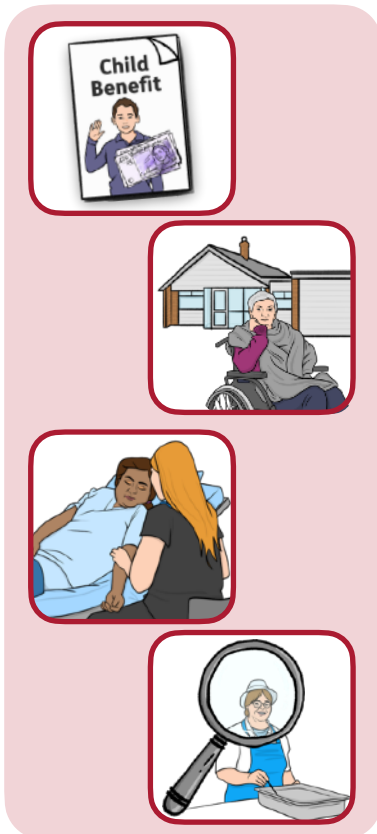


Easy
Read

Help with the cost of living



Prices are going up for lots of things like food and electricity.



The Royal Borough of Greenwich can help you if you are struggling with things like:

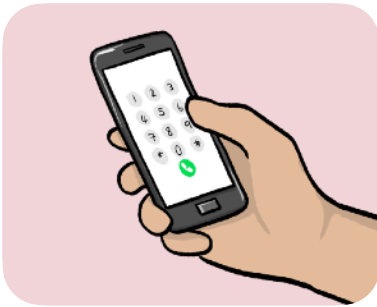
- Benefits.
- Housing.
- Health.
- Finding a job.

Please contact us if you need help

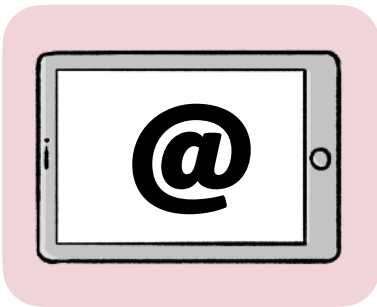


You can look at our website for support here:

www.royalgreenwich.gov.uk/greenwich-supports



You can call Live Well Greenwich free on 0800 470 4831.



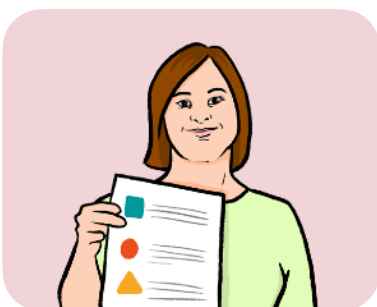
You can email us at:
cost-of-living@royalgreenwich.gov.uk

Let us know how you are coping with prices going up

Fill in our survey.



You can scan this code with your phone to go to the survey.



If you want a printed copy of the survey, please email us.

Come and speak to us

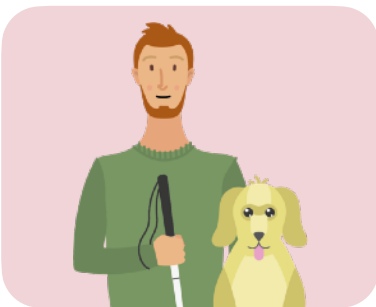


Come to one of our advice centres to speak to us and get support.



To find all of our advice centres, go to: www.royalgreenwich.gov.uk/advicehubs

You can come to our advice centres at:



1. The Forum
Trafalgar Road, SE10 9EQ.
Mondays 10am to 12 noon.



2. Woolwich Clockhouse Community Centre
Woolwich Dockyard, SE18 5QL.
Fridays 9.30am to 12 noon.



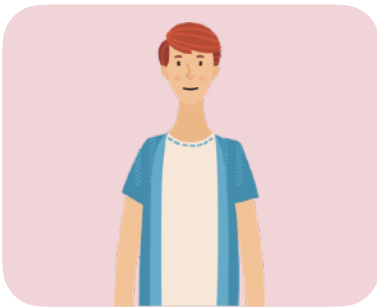
3. Thamesmead Moorings Social Club
Arnott Close, SE28 8BG.
Wednesdays, 9.30am to 12.30pm.



4. Migrant Hub - Woolwich Common Community Centre

Leslie Smith Square, SE18 4DW.

Tuesdays 10.30am to 1.30pm.



5. Glyndon Community Centre

Raglan Road, SE18 7LB.

Thursdays 10am to 12 noon.



6. St Mary's Community Centre

180 Eltham High Street, SE9 1BJ.

Wednesdays, 10am to 12 noon.

This is a map of where the centres are:

